

Future Direction

Developing quality services through
innovation



Mervyn Taylor

Structure

- 'The End'
- General response
- Innovation - 'A Third Way for the Third Age'

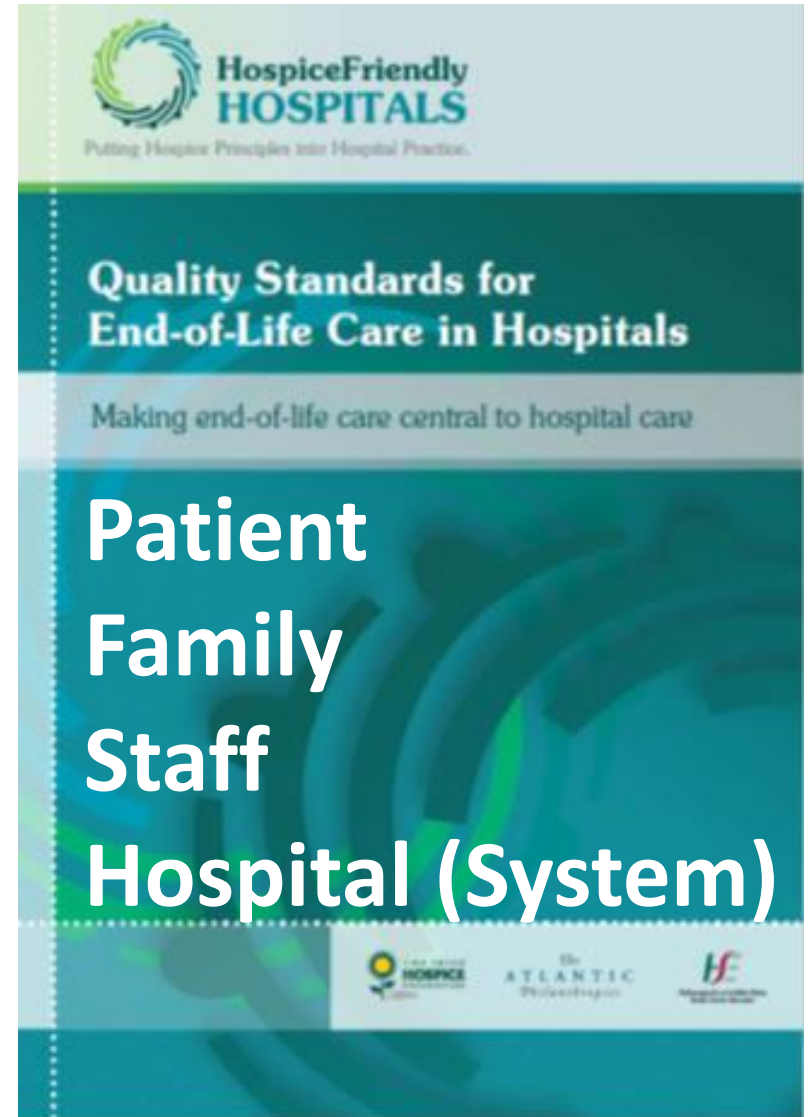
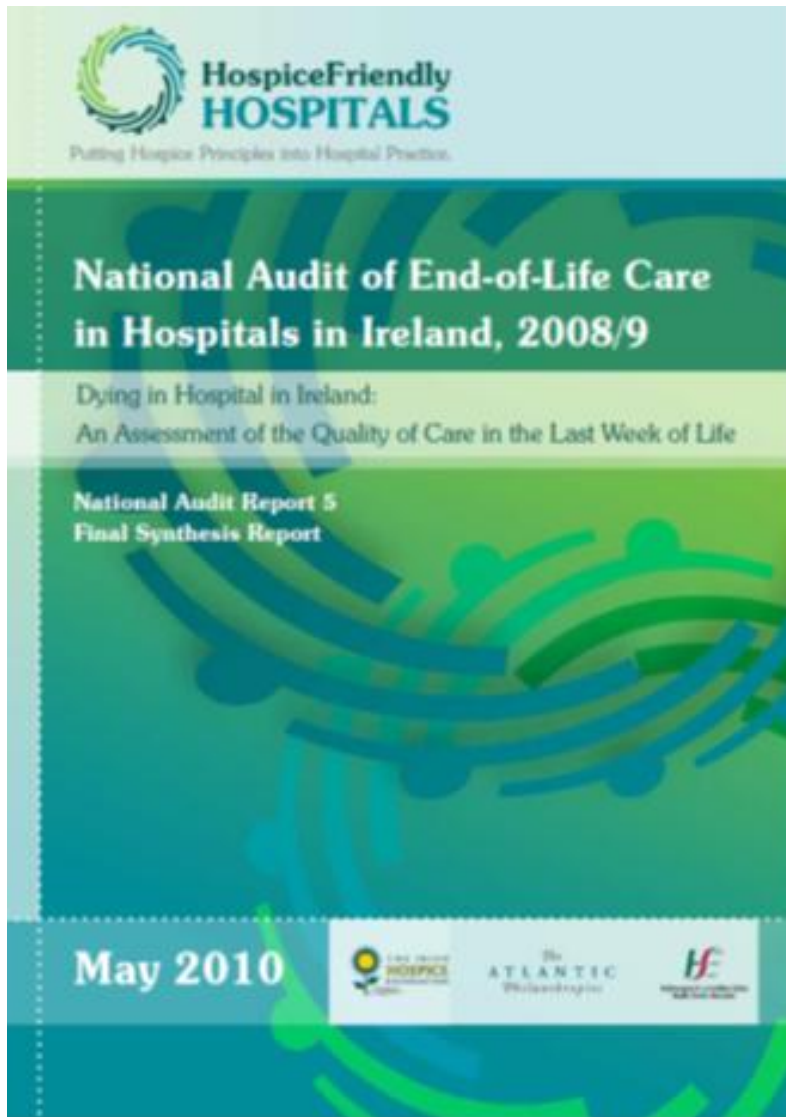




Take a seat in the Waiting Room
←
Your X-Ray form will be collected
from you.



Implement - Enhance - Innovate



The Learning

'Pilots' need Airports



Innovation needs Support

Troika



Perestroika

“A state without a high performing public sector is a failing state” McKinseys



SMART Economy – SMART Society

“There is a good chance that within the next 20-40 years the innovative capacity of societies and governments will become at least as important a differentiator of national success as the innovative capacity of economies”

Geoff Mulgan: SKOLL Centre for Social Entrepreneurship. Oxford Said Business School

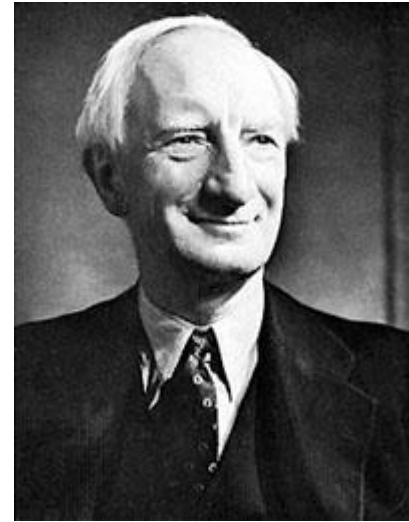
SOCIAL INNOVATION What it is, Why it matters and How it can be accelerated

Achieving Quality - Key Messages



- Lack of trust in the state & pessimism in its capacity to achieve public good
- Individual organisations need to be helped to improve
- Alternative institutional models of provision needed (e.g. social enterprise) to stimulate wider change in a given policy area e.g. elder care

The State as 'Commanding Heights'



The State as Co Creator User & Provider



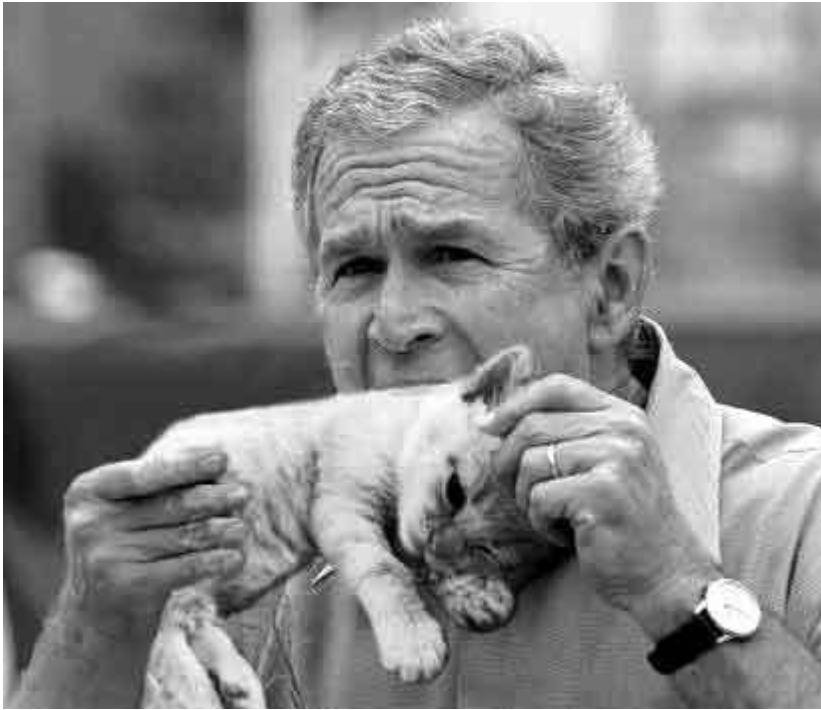
SMART REGULATION

Plurality of forms of regulation

- **No ready-made blueprints** to resolve many issues
- **Solutions have to be developed through an exploratory process with the users themselves**
- **A series of related steps rather than isolated actions** involving users at every stage
- **Getting a range of perspectives**, especially with regard to whether the desired outcomes have been attained.
- User participation is part of a **process of illuminating the outcomes** individuals and groups would like

QUALITY & STANDARDS

“There’s more than one way to skin a cat”



A THIRD WAY FOR THE THIRD AGE

- innovation in the public interest





Rising Life Expectancy

- Requires new ways of organising pensions, care and mutual support
- The allocation of healthcare risks between state and individuals will have to adapt
- New models of housing and urban design
- New methods for countering isolation
- Greater use of technology
- Social & economic challenges & opportunities

**MORE
MORE
MORE**

"Investment in the supply of **more** and better care for older people in the community and in residential settings will be a priority of this Government. **Additional** funding will be provided each year for the care of older people. This funding will go to **more** residential places, **more** home care packages and the delivery of **more** home help and other professional community care services".

Programme for Government 2011

Older & Colder



Which scenario do we plan for?



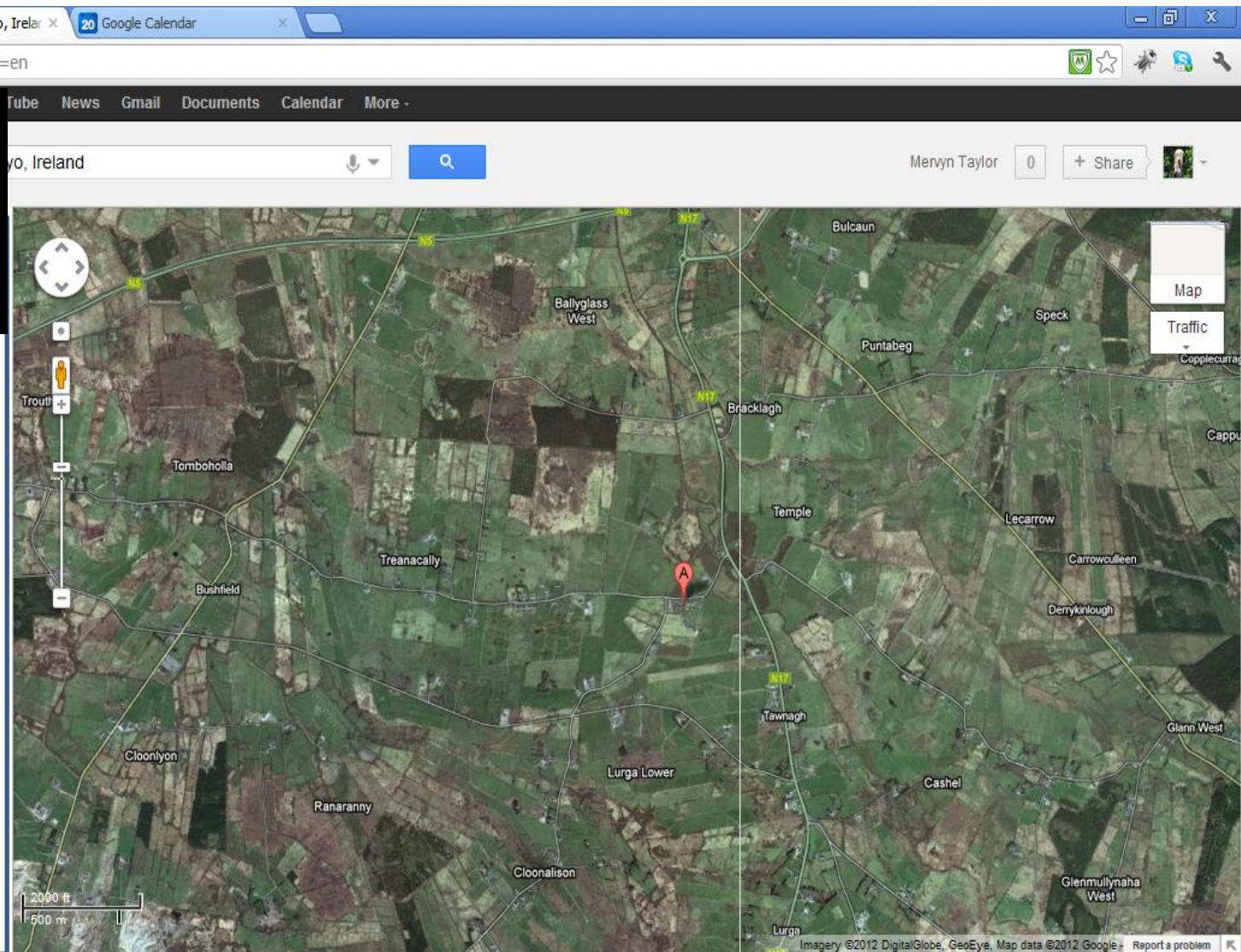


Public Sector provision – 25%
10% post 2015 ?

'Private Sector' Provision – 75%



*"It's lonely
around the
fields of
Athenry"*



“Providing care homes for the elderly and disabled should offer one of the safest investments on the stock market”

**8% GUARANTEED
NET RETURNS FOR
UP TO 10 YEARS**

15% interest paid on deposit

26.87% below RICS valuation



DISCOUNTED LAUNCH PRICE - LIMITED AVAILABILITY



"Providing care homes for the elderly and disabled should offer one of the safest investments on the stock market. Local authorities pick up the bill and there is never any shortage of people needing a bed."

- The Independent

DOWNLOAD

Tell us where to send your complimentary investment brochure

Name:

Email:

Telephone:

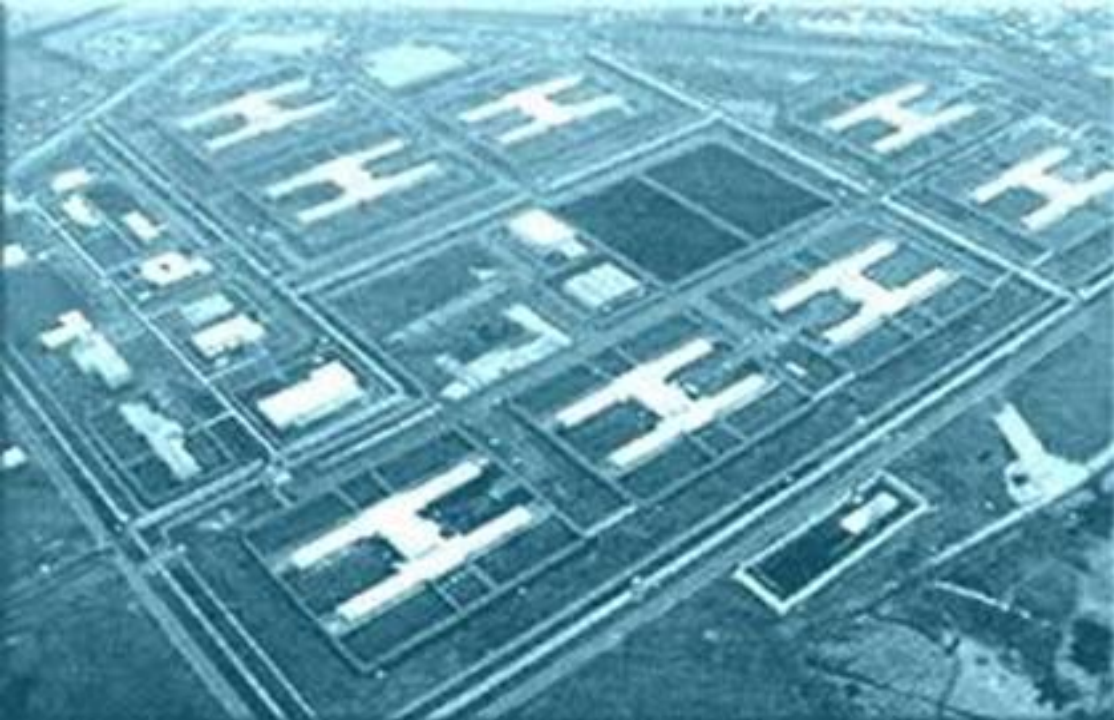
Country you live:

UK Care Home Investment

Available considerably below RICS valuation, investors can purchase a specialist unit within the facility and secure a rental guarantee of 8% net

Investment Highlights

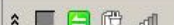
- 8% Guaranteed Net Returns for up to 10 Years
- 15% Interest Per Annum Paid on Deposit During Construction



Home
Hotel
Hospitality
Hospice
Hospital
H-Block



EN



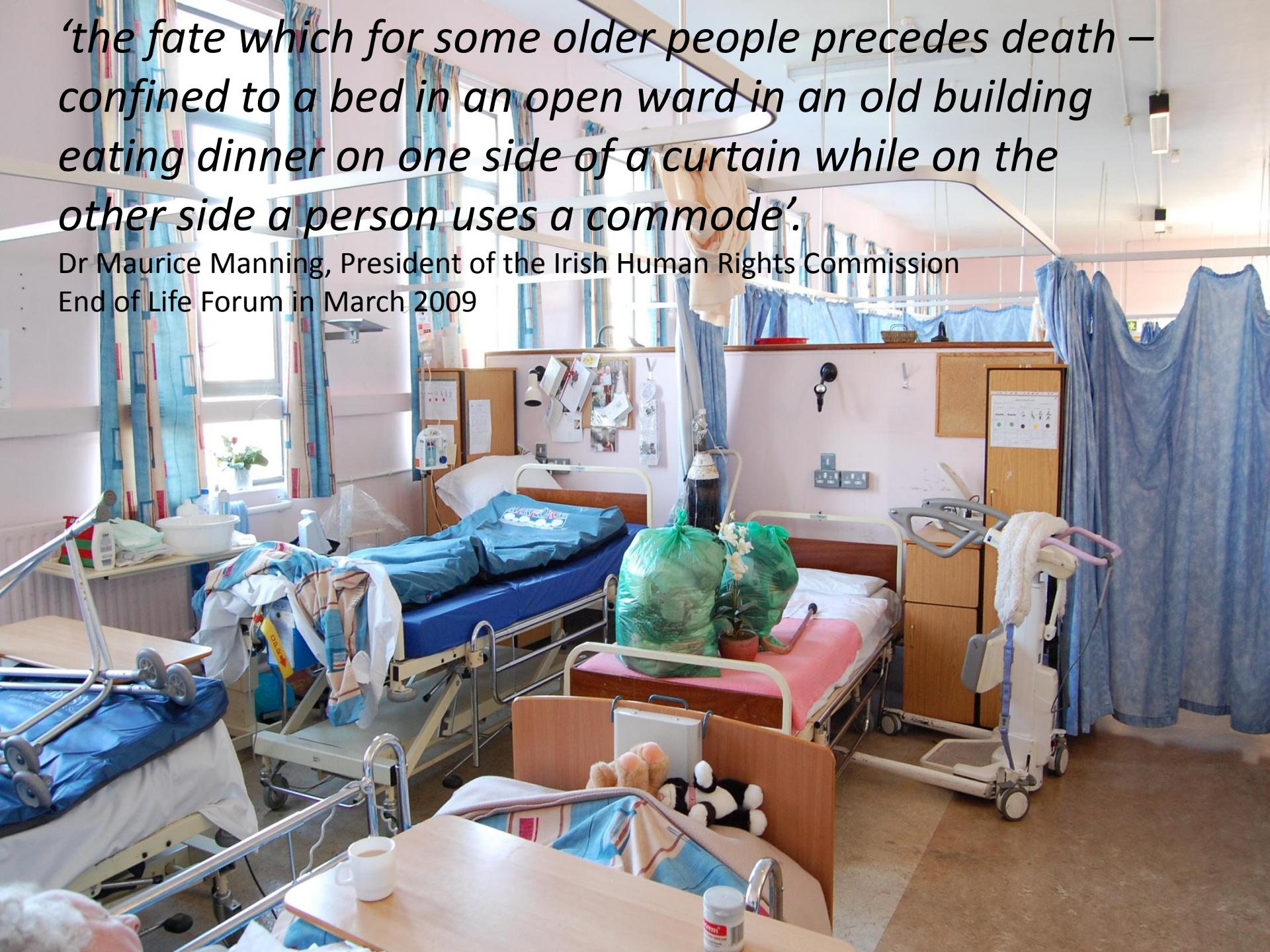
18:12
10/09/2012

Defending the indefensible?

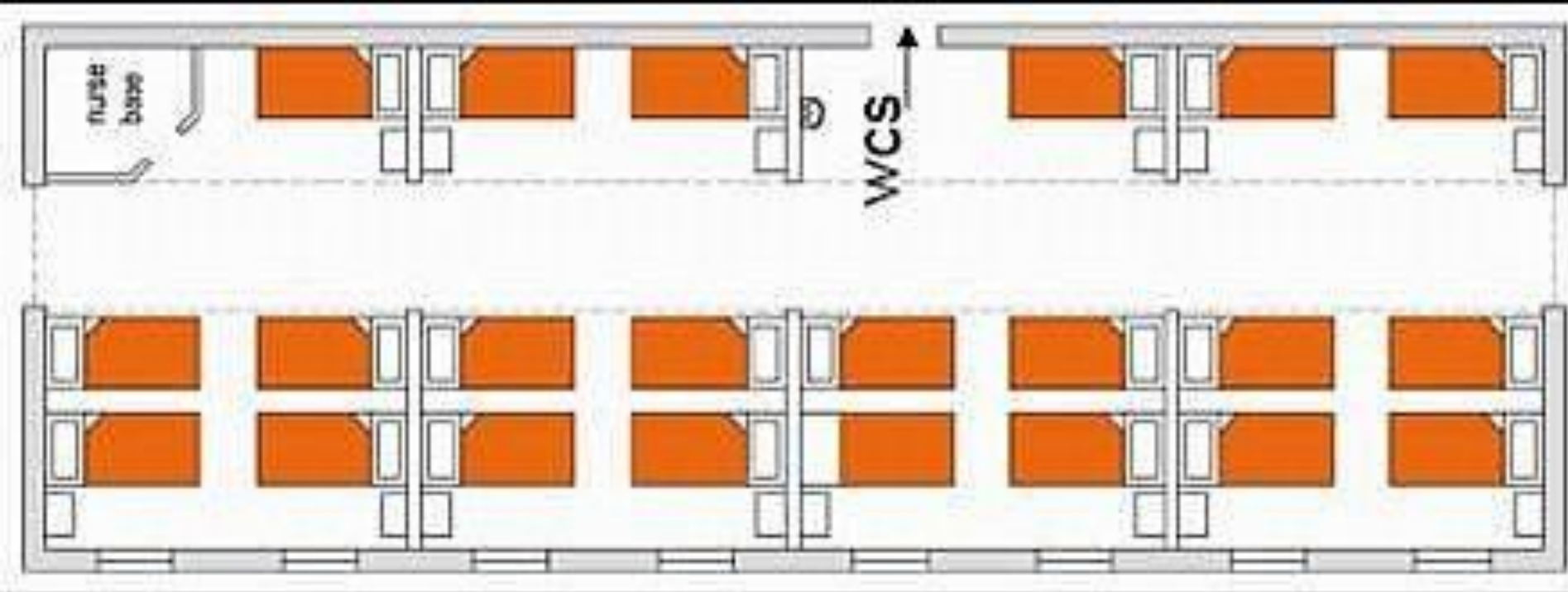


*‘the fate which for some older people precedes death –
confined to a bed in an open ward in an old building
eating dinner on one side of a curtain while on the
other side a person uses a commode’.*

Dr Maurice Manning, President of the Irish Human Rights Commission
End of Life Forum in March 2009



Standards - Less of the same?



“No one’s putting me in that home”





I Want to
grow old at home



**older &
bolder**

Tel: 01 8783623

Support equality for older people
Find out how www.olderandbolder.ie

ink Art
photos/ink55

The Four Pillars of the Third Way

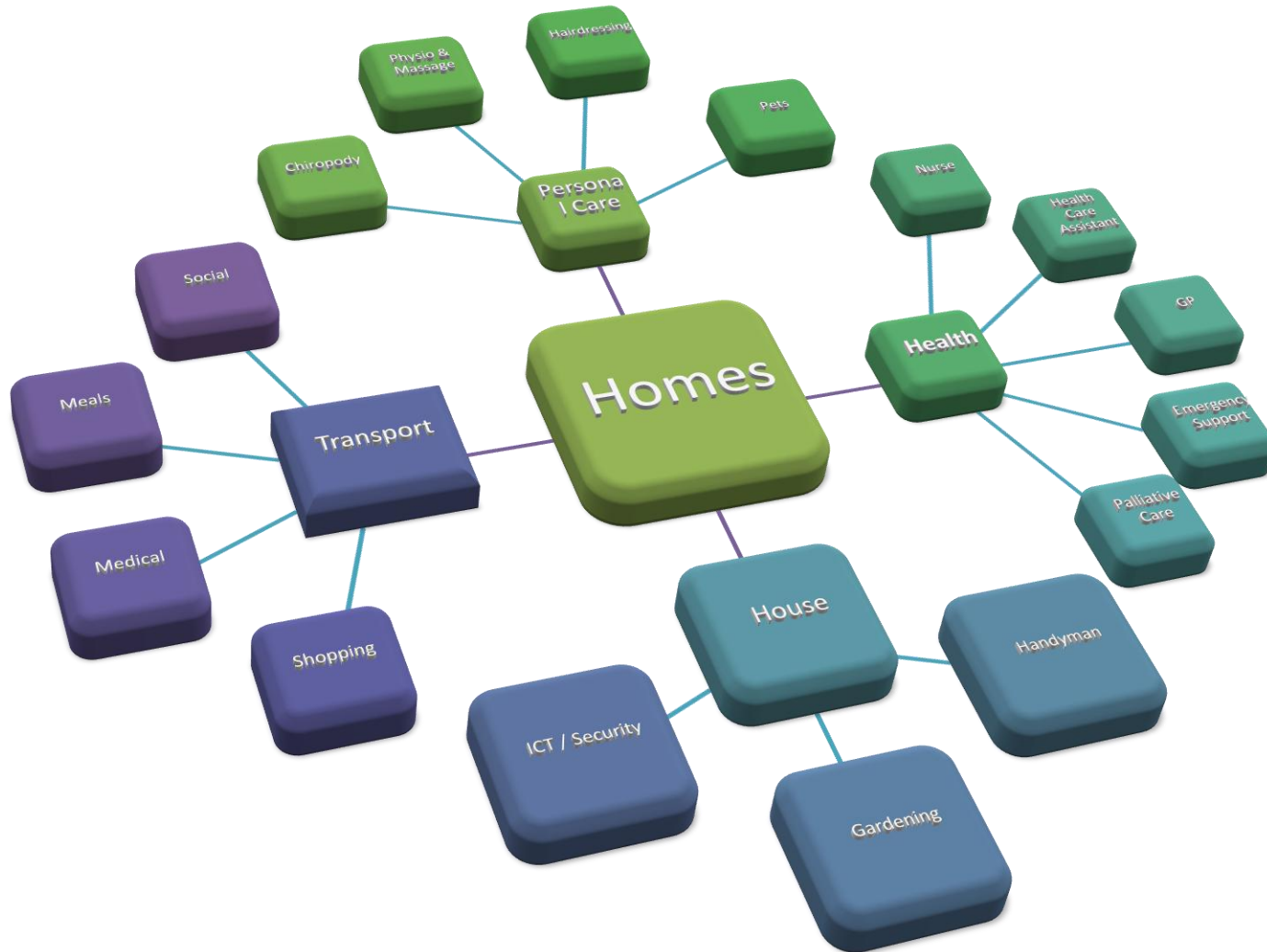


- **Individualisation of Supports** according to needs and preferences
- **Intelligent Networks** to respond to and organise needs across defined areas - *Public Interest Trusts*
- **Innovation** with regard to the type and use of resources and the impact of their usage
- **Institutional Learning & Oversight** to ensure accountability for best use of resources, quality of experience and outcomes and transfer of learning across all sectors

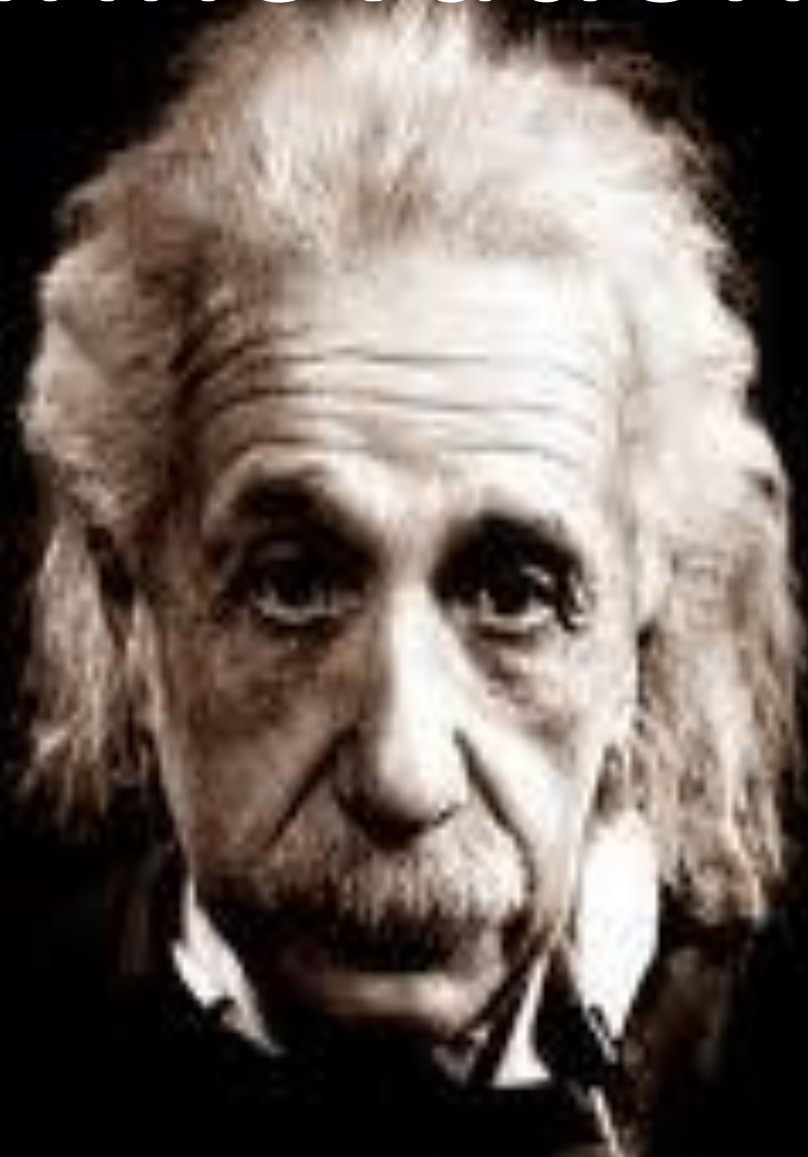


Intelligent Networks

time - influence - continuity



Innovation



$$ADL+S+C= LTC/2$$

Push factors re nursing home use

– fear & security, loneliness, bereavement, living alone

Age & Opportunity (2003)



Alternatives to Residential Care

PSSRU

 Housing LIN



Improving housing
with care choices
for older people:

an evaluation of
extra care housing

Ann Netten, Robin Darton, Theresia Bäumker and Lisa Callaghan

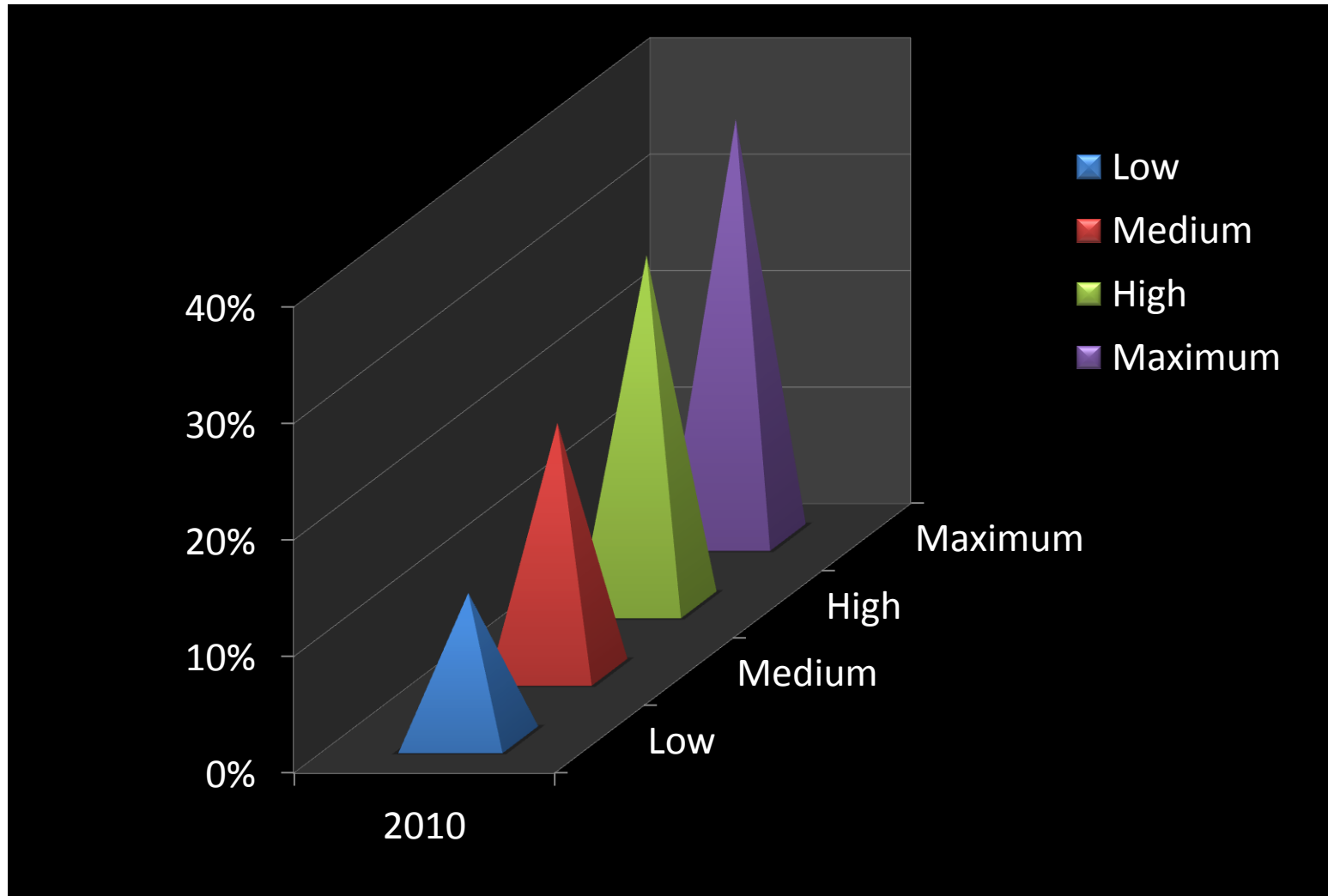
“extra care housing can provide many people with a qualitative alternative to residential care....it can also limit the growth in health and social care costs as the population ages”

Dementia Friendly Environments

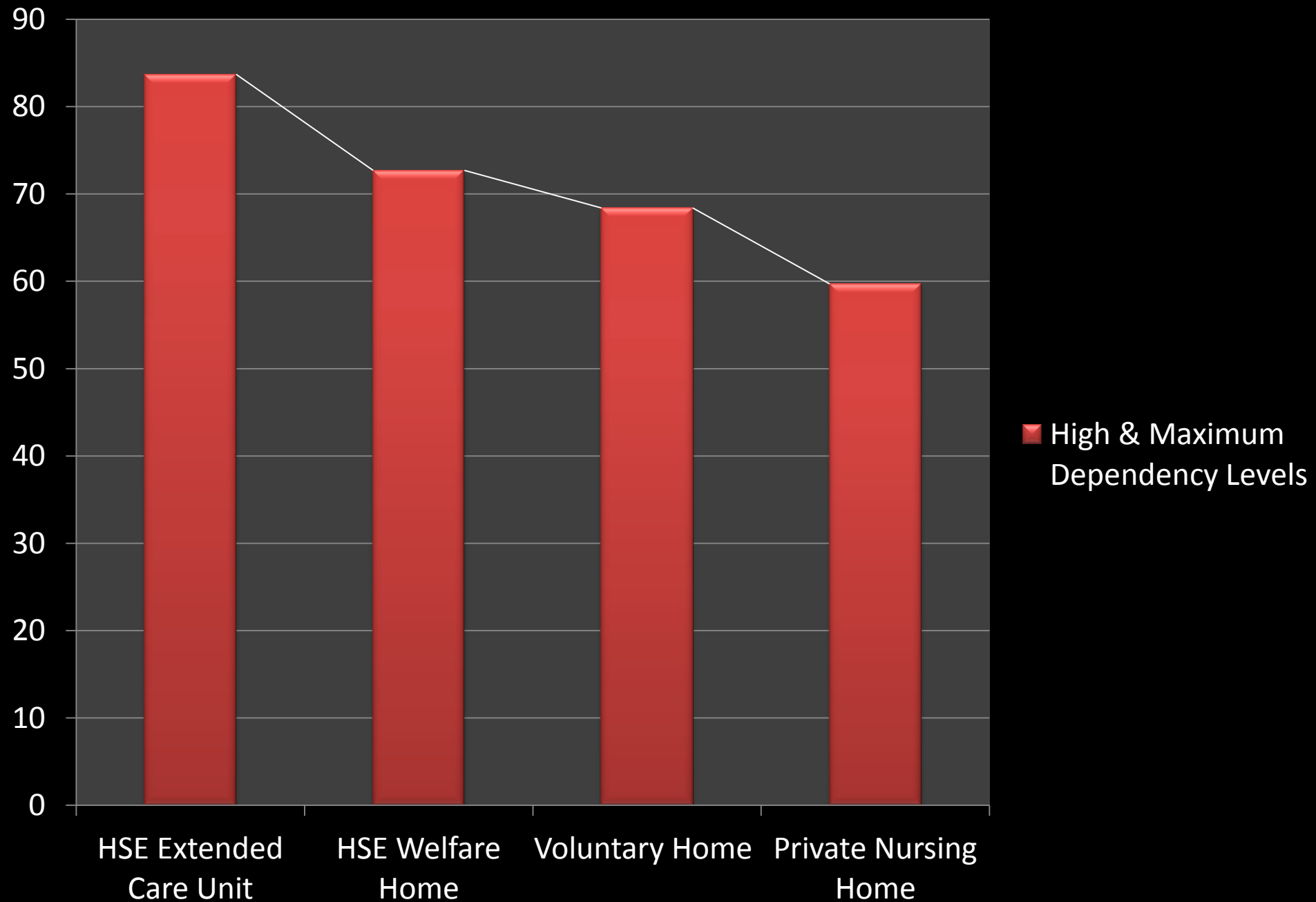


Dependency Levels

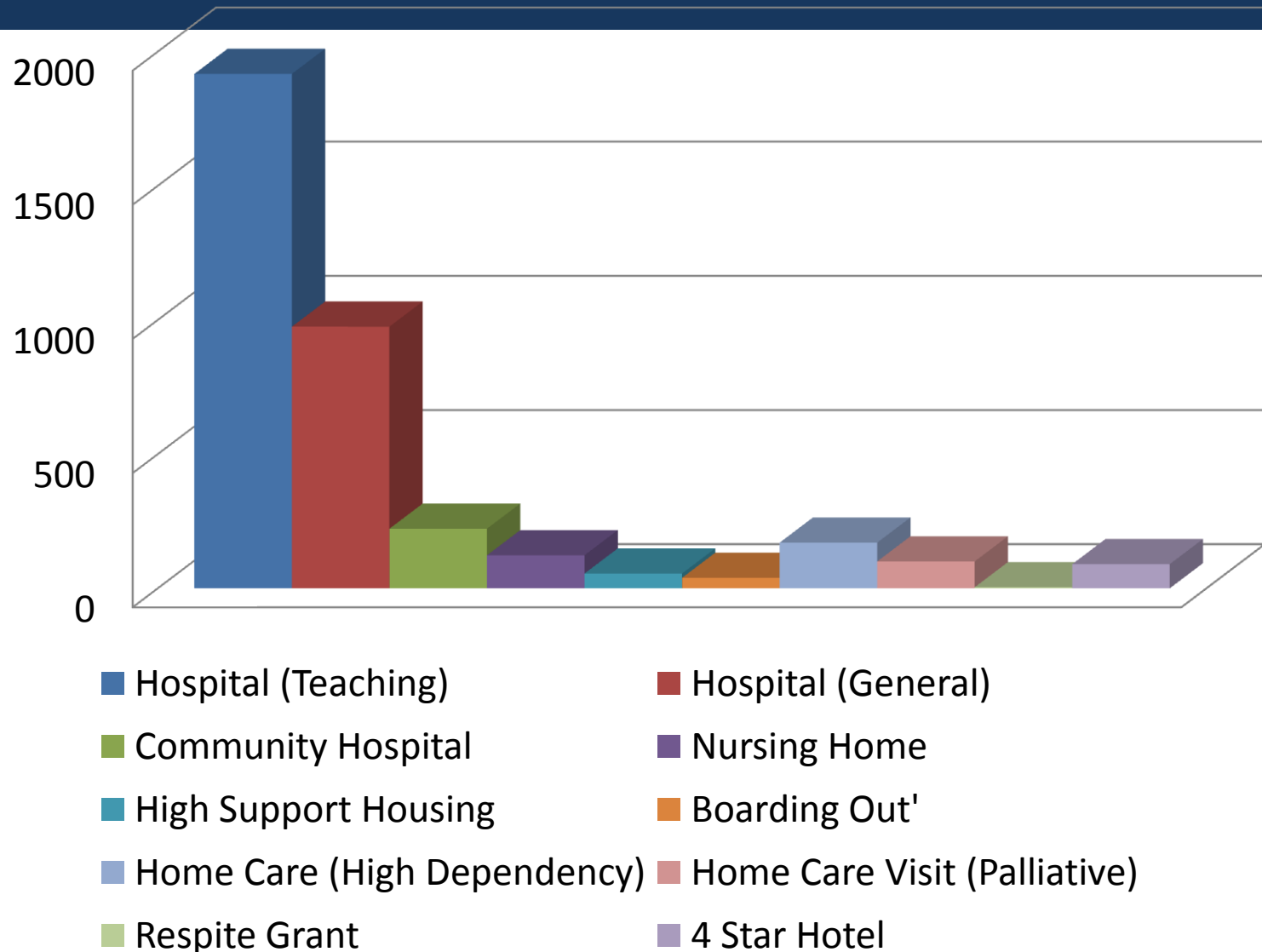
DoH Long Stay Activity Reports



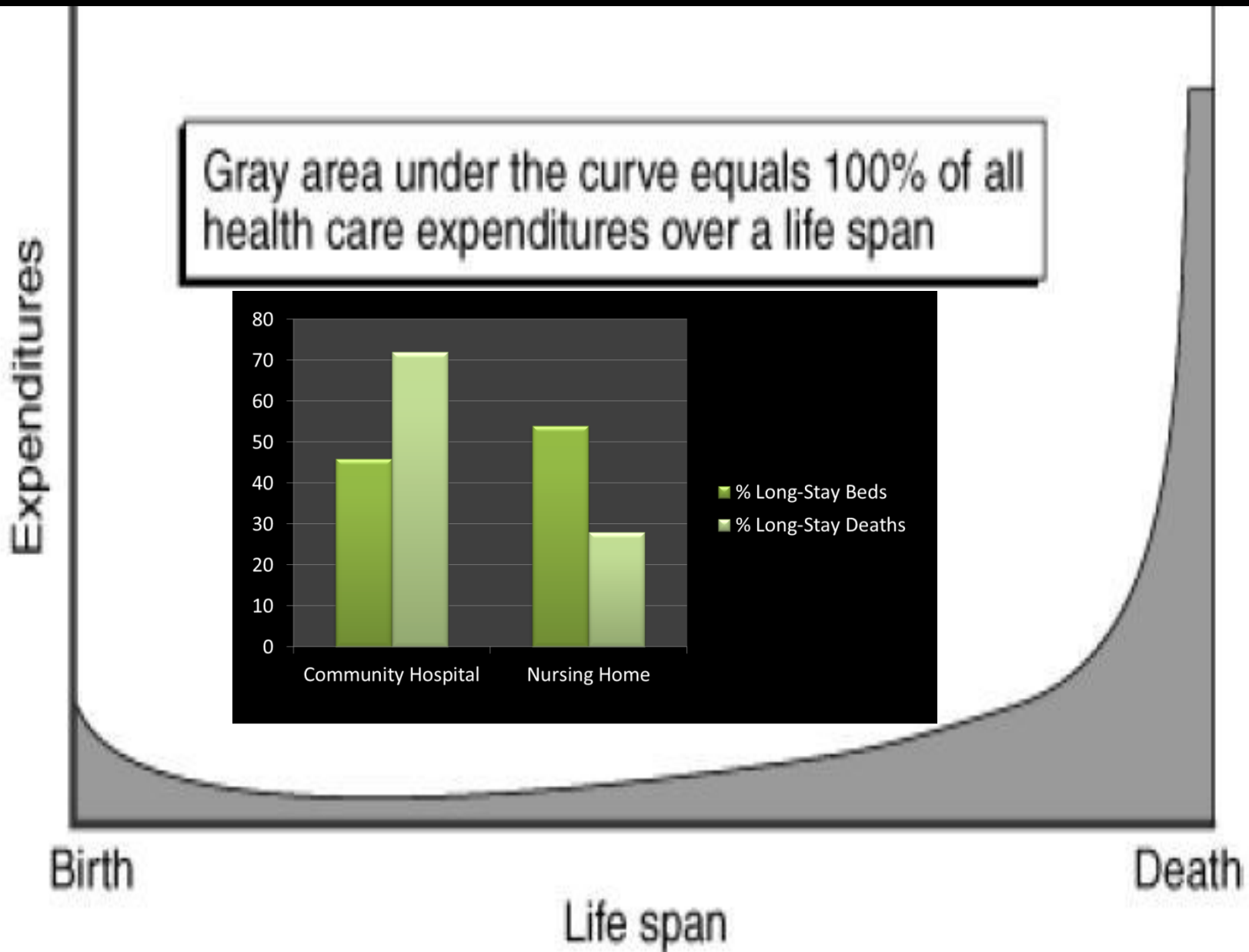
High & Maximum Dependency Levels



The Continuum of Care & Cost



Health Care Expenditure - Lifespan



Additional Resources

Now

- 'Fair Deal'
- Home Care Packages
- Home Help
- Public Health Nurse
- GP – Out of Hours
- Respite Care Grant

Future ?

- Unified LTC Fund
- Transport
- Volunteers
- Trained Family Carers
- House Sharing
- Fostering
- 'Care Bonds'
- Property & facilities donation
- Advance Nurse Practitioners
- 'Home Emergency' Response
- Convalescence / Rehab
- Silver economy / jobs
- Supportive Technology

Institutional Learning & Oversight



Lernen Sie von
den irischen



Department of the Taoiseach
Roinn an Taoisigh



An Chomhairle Náisiúnta Eacnamaíoch agus Shóisialta
National Economic & Social Council



Health
Information
and Quality
Authority



An Roinn Sláinte
DEPARTMENT OF HEALTH



Irish Council
for Social Housing



SOUTHSIDE
PARTNERSHIP

SUPPORTING PEOPLE. SUPPORTING COMMUNITIES.

NHI
nursinghomesireland



tilda

The Irish Longitudinal
Study on Ageing



CORI
CONFERENCE OF
RELIGIOUS OF IRELAND

IMPACT
Trade Union



CHESHIRE
IRELAND *learning through listening*

THIRD



AGE

VALUING OLDER PEOPLE. EMPOWERING COMMUNITIES. ENRICHING LIVES



Summary

- Regulation not enough – innovation required
- The move from public to private residential care HAS happened - circa 10% by 2015
- It's about preferences & needs not just ownership
- Focus on continuum of care & cost to 'save and invest'
- Four Pillars
 - Individualisation
 - Intelligent Networks
 - Innovation
 - Institutional Learning & Oversight
- Business case for Public Interest Trust starts January.

The Starship Social Enterprise

"It's the state Jim...but not as we know it"



MAP 3 % POPULATION 65 PLUS

Small Areas (SAs)
% of Population: 65 Years plus

0% - 5%
6% - 11%
12% - 16%
17% - 22%
23% - 29%
30% - 49%

Target Neighbourhoods

Ordnance Survey Ireland Licence No. EN000512
© Ordnance Survey Ireland/Government of Ireland
Scale 1:50,000

MERVYN TAYLOR PATHFINDER



Pathfinding is about finding a way forward
for people and organisations



Mobile: +353 86 8227998
Skype: mervynrtaylor

mail@mervyntaylor.com
www.mervyntaylor.com