

# GEORGIAN NEIGHBOURHOOD LIMERICK

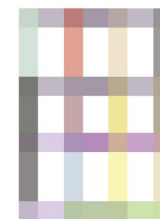
INNOVATING TO TRANSFORM  
URBAN LIVING & WORKING

## A PROGRAMME OF REVITALISATION

*NESC Roundtable Understanding Resilient and Sustainable Cities 15.04.2021*

# Activating for Renewal

We are revitalizing Limerick's neglected Historic Georgian Neighbourhood into a prime location for urban living and working



**GEORGIAN  
NEIGHBOURHOOD  
LIMERICK**

INNOVATING TO TRANSFORM  
URBAN LIVING & WORKING

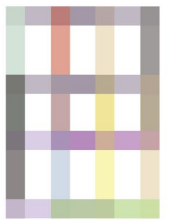


# POTENTIAL

## Transforming challenges into opportunities

### CHALLENGES

- Compact development required by NPF 2040
- Climate Change Goals – 9 years to decarbonise
- High Level of Vacancy
- Lack of quality housing
- Lack of diversity
- Car dominant public realm



**GEORGIAN  
NEIGHBOURHOOD  
LIMERICK**

INNOVATING TO TRANSFORM  
URBAN LIVING & WORKING



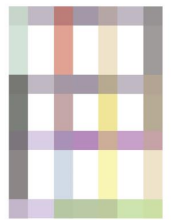
# POTENTIAL

Transforming challenges  
into opportunities

## GOALS

- **City centre Living** – Revitalisation.
- **Climate change** – Energy transition
- **Embrace digital economy**– Digital collaboration

Ireland's First Historic **CityLab**  
Innovation and Collaboration District



**GEORGIAN  
NEIGHBOURHOOD  
LIMERICK**

INNOVATING TO TRANSFORM  
URBAN LIVING & WORKING

# PROGRESS

## 3 years of work

- Targeted Dereliction Initiative
- Strategy Development
- Funding Applications

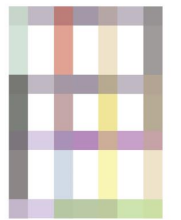
## EU H2020 Funding +CityxChange

- €6.5m to Limerick to 2022

## URDF- 'Living Georgian City'

- €10.1m to 2022

# Activating for Renewal



**GEORGIAN  
NEIGHBOURHOOD  
LIMERICK**

INNOVATING TO TRANSFORM  
URBAN LIVING & WORKING



## *Our process of* **Urban Innovation**

- 1. Demonstration**
- 2. Activating Land & Buildings**
- 3. Activating Finance**
- 4. Collaboration**

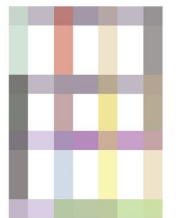
*But how will we achieve this?*

## **APPROACH**

Acting as a catalyst  
for change

## **The Georgian Neighbourhood 2030**

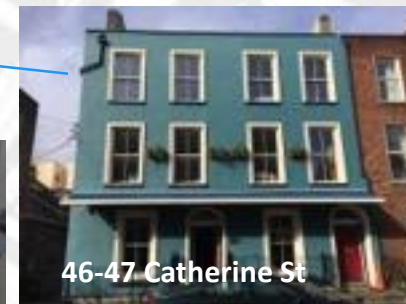
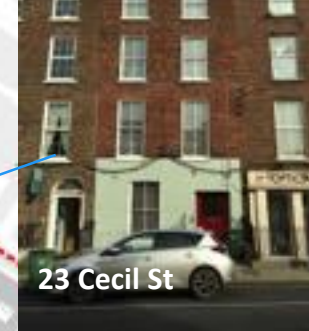
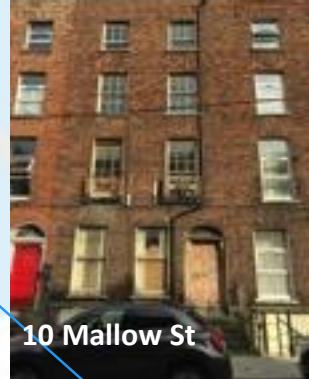
...will have far reaching benefits for housing, business, and placing Limerick on the map in terms of innovative urban development and smart energy usage.



**GEORGIAN  
NEIGHBOURHOOD  
LIMERICK**

INNOVATING TO TRANSFORM  
URBAN LIVING & WORKING





IRISH NEIGHBOURHOOD  
RELIEF & VACANCY  
out of Dereliction and in Progress  
occupied  
Buildings with total Vacancy  
Irish Neighbourhood

SITES  
ACTIVATION

+25 Buildings ReOccupied  
+40 Buildings In Progress





**Coordinating with :**  
**L2030** - Gardens International  
**Innovate** - Digital Collaboration &  
Virtual Reality Centre – Cecil street

**URDF- ‘Living Georgian City’  
Programmes of Work:**

- 1.Smart Ageing Homes
- 2.Community Led Housing
- 3.Laneways Activation
- 4.Open Innovation Lab- UL
- 5.Co-working space

# BUILDING ACTIVATION

*Leading by Example*  
Buildings Renovation  
Public Realm Upgrades

IMPLEMENTATION



INNOVATING TO TRANSFORM  
URBAN LIVING & WORKING

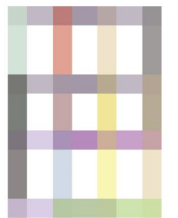


# FINANCE activation

*Enabling the private sector  
to be part of the  
initiative*

1. **Investment Vehicles**
2. **Grants and Incentives Advisory Services**
3. **Matchmaking Events**
4. **Targeted Dereliction and Vacancy Initiative**

**PRIVATE  
INVESTMENT**



**GEORGIAN  
NEIGHBOURHOOD  
LIMERICK**

INNOVATING TO TRANSFORM  
URBAN LIVING & WORKING



# ACTIVATING INTEREST

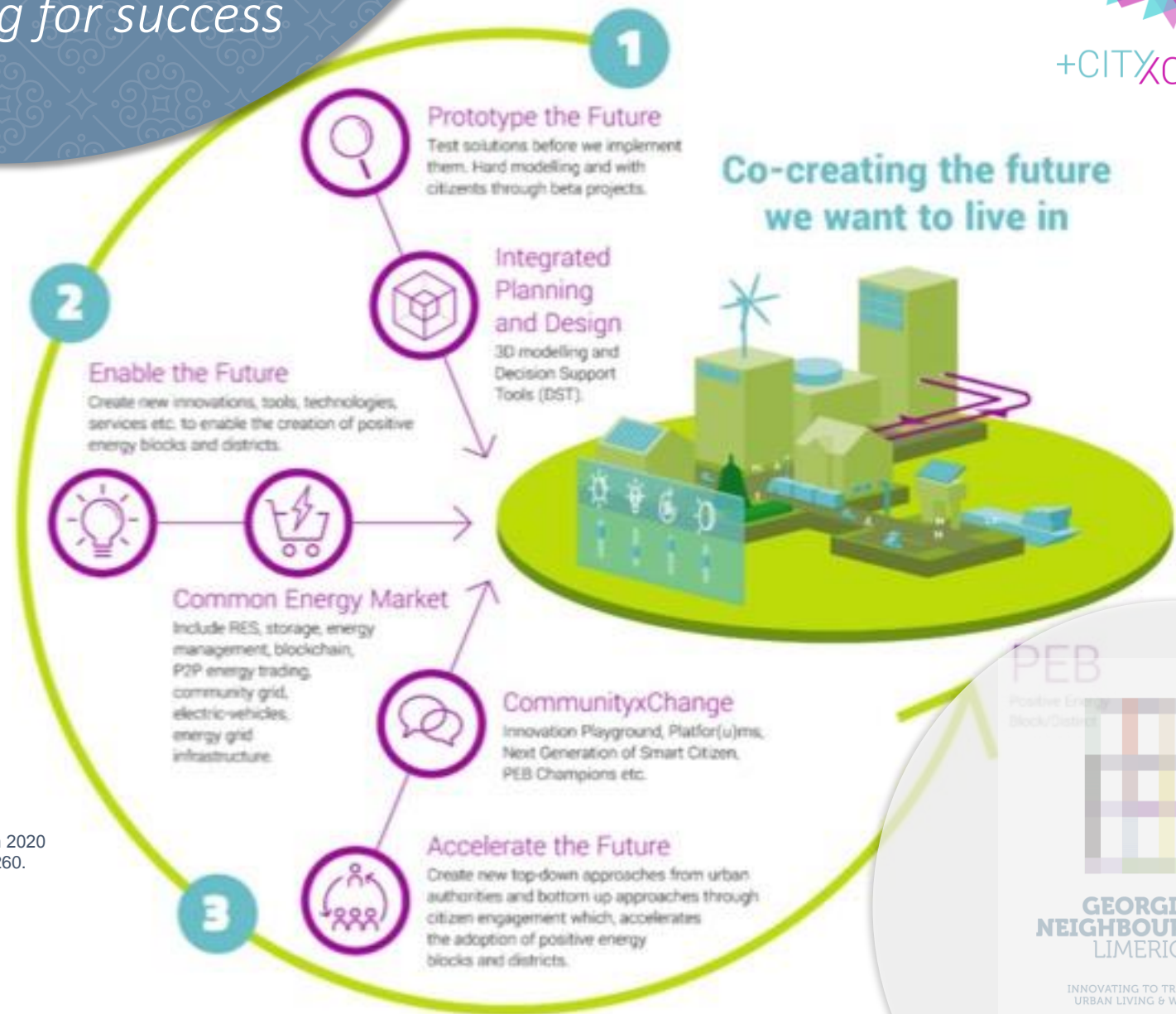
*Collaborating for success*

- Digital Collaboration tools
- Urban Prototyping
- Regulatory Sandbox
- Community Energy Grid
- Demonstration Projects
- Collaboration Leader
- Champions/Influencers
- Cross-media marketing



This project has received funding from the European Union's Horizon 2020 research and innovation programme under grant agreement No 824260.

## CO-CREATION





## Urban Innovation Department

Senior Architect- Head of UID

Senior Executive Planner

Senior Executive Architect

Collaboration Manager

Executive Energy Engineer

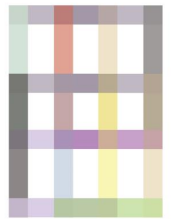
Executive Planner

Assistant Architect

Collaboration Officer

Project Manager

## Organisational Resources



**GEORGIAN  
NEIGHBOURHOOD  
LIMERICK**

INNOVATING TO TRANSFORM  
URBAN LIVING & WORKING



# Organisational Resources

**Coordinating with :**

**L2030** – Site Development Appraisals

**Forward Planning** – City Centre Strategy

**Environment-** Decarbonisation Zone, Climate Change Strategy

**Design & Delivery** – Procurement and Project Management

**Innovate** - Digital Collaboration Management

**Urban & Rural Social Development-** Dereliction & Vacancy

**Property-** Property Acquisitions

**Housing** – Cooperative Housing Development

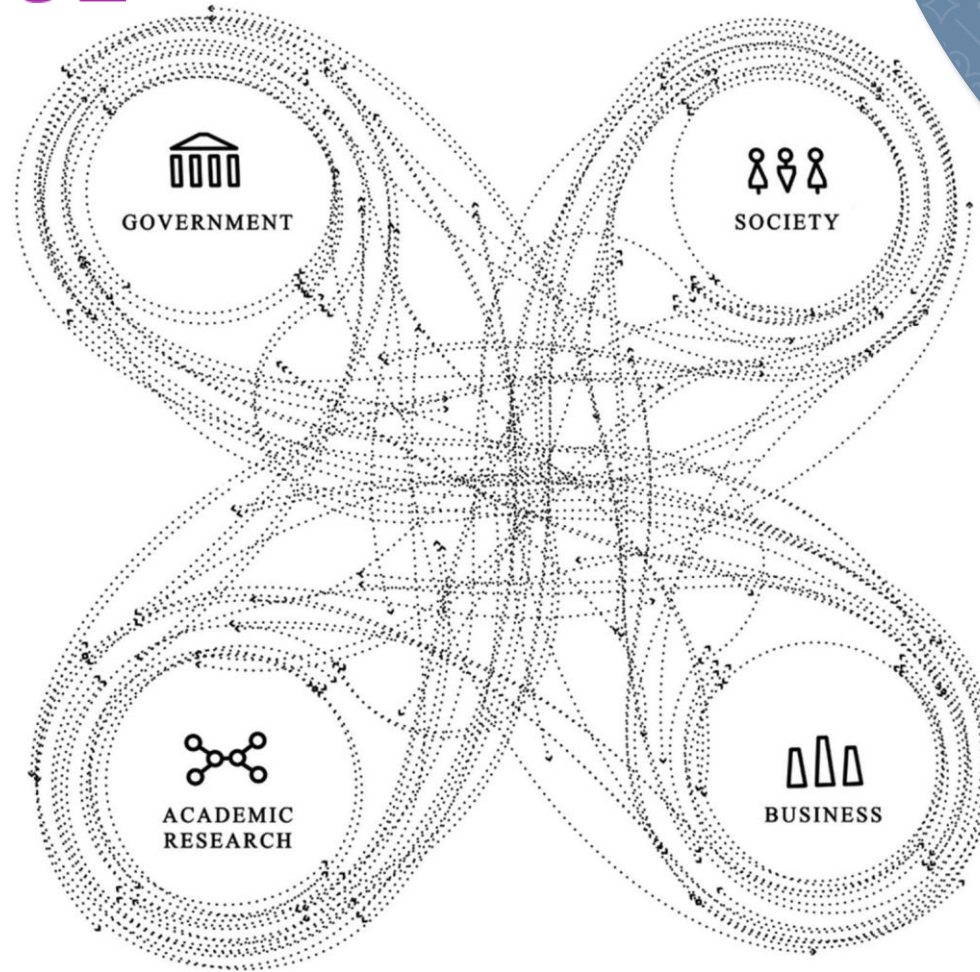
**Communications-** Georgian Neighbourhood Comms



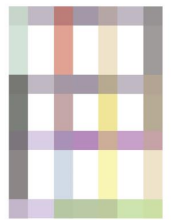
INNOVATING TO TRANSFORM  
URBAN LIVING & WORKING



## Cross Agency Cooperative Action



*Figure 3.2.1.1 The Quadruple Helix Model adapted by Fraunhofer (2016), originally developed by Carayannis and Campbell (2009). Copyright © 2015 Fraunhofer.*



**GEORGIAN  
NEIGHBOURHOOD  
LIMERICK**

INNOVATING TO TRANSFORM  
URBAN LIVING & WORKING





INNOVATING TO TRANSFORM  
URBAN LIVING & WORKING







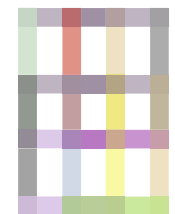


Rosie Webb | [rosie.webb@limerick.ie](mailto:rosie.webb@limerick.ie)



**Website:** <https://www.limerick.ie/discover/explore/areas-limerick/georgian-neighbourhood-limerick>

CONTACT INFO



**GEORGIAN  
NEIGHBOURHOOD  
LIMERICK**

INNOVATION TO HELP TRANSFORM URBAN LIVING