

INCASE

Irish Natural Capital Accounting for Sustainable Environments

March 2019 to
March 2023
EPA Report 441



Jane Stout



Catherine Farrell



Trinity
College
Dublin

The University of Dublin



Mary Kelly-Quinn



Lisa Coleman



Stephen Kinsella



Daniel Norton



UNIVERSITY of LIMERICK
- OLLSCOIL LUIMNIGH



Cathal O'Donoghue



OÉ Gaillimh
NUI Galway



Iseult Sheehy



Fiona Smith



NATURAL
CAPITAL
IRELAND



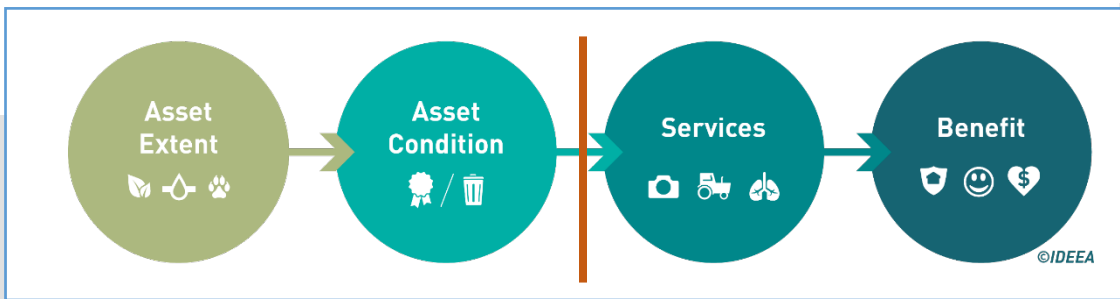
Carl Obst



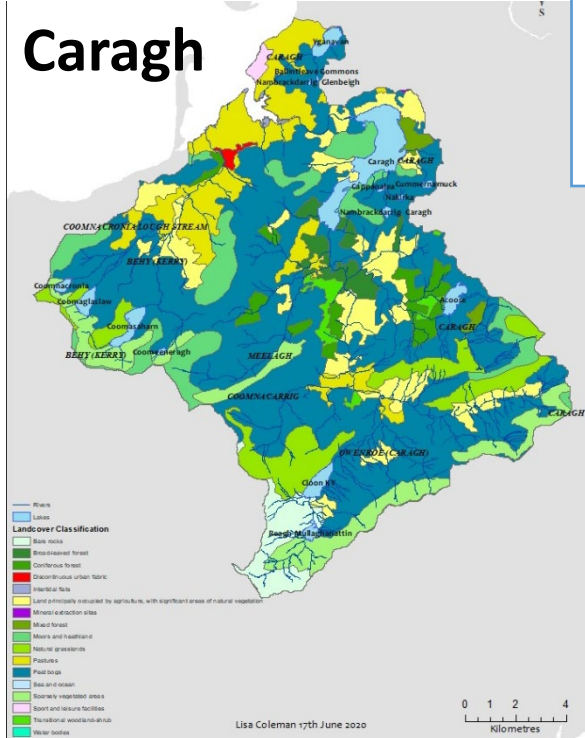
Mark Eigenraam



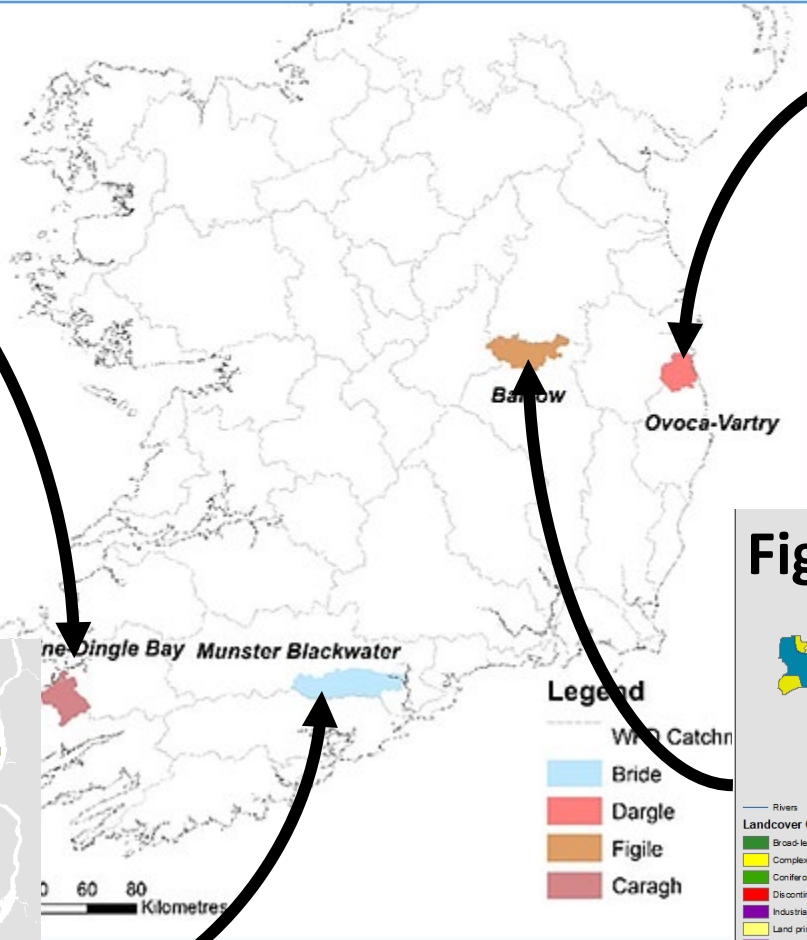
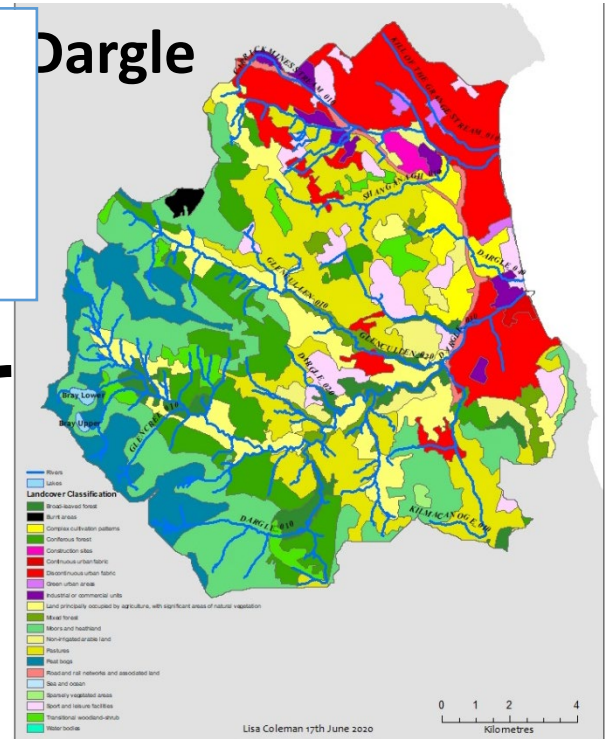
IDEEA Group
Institute for Development of Environmental-Economic Accounting



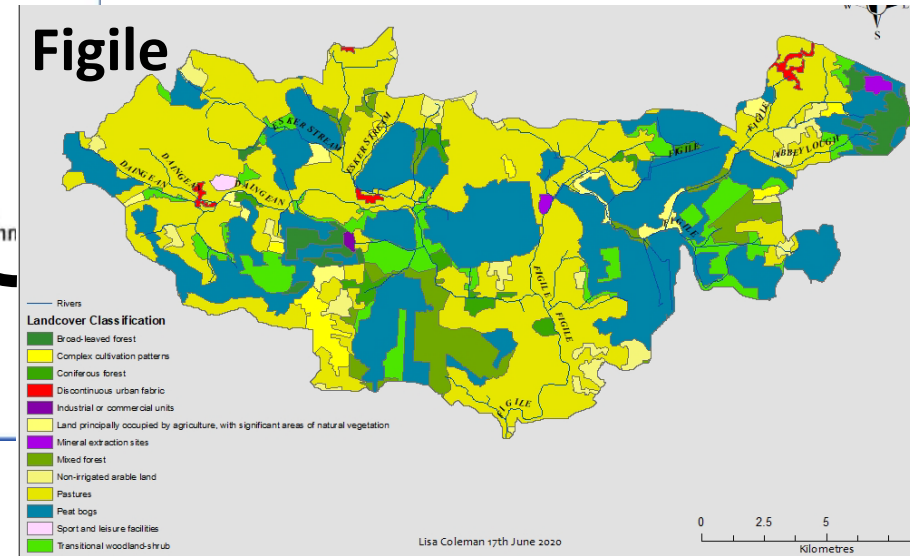
Caragh



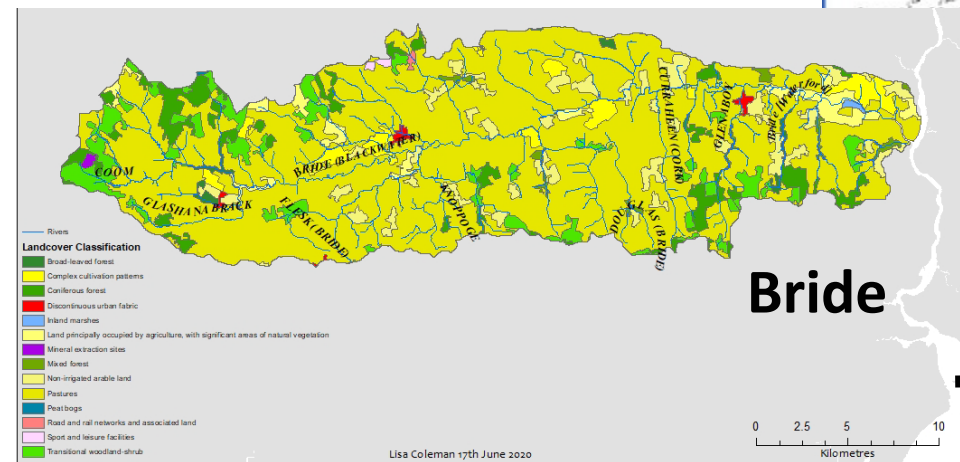
Dargle



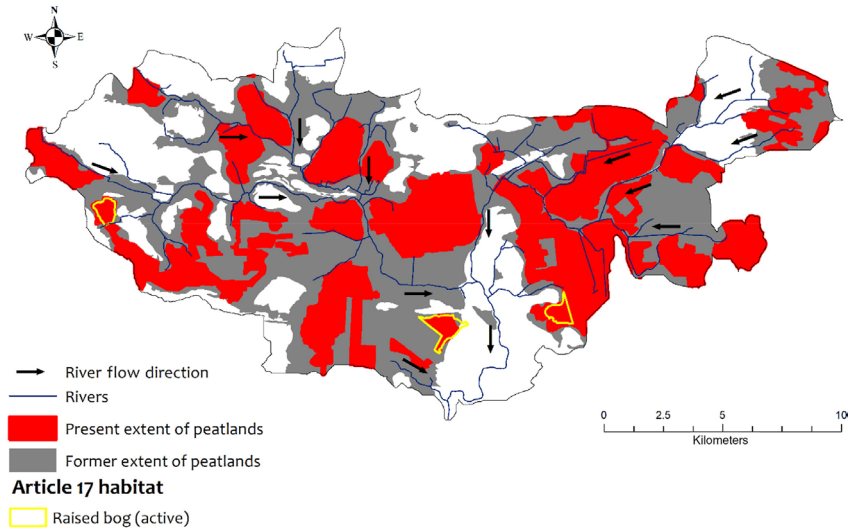
Figle



Bride



CORINE 2018



Coverage of habitat surveys (58%) available for the Dargle accounting area.

Characterisation of At Risk sub-basins in the Dargle.

<https://oneecosystem.pensoft.net/article/65582/>

1. How to develop extent and condition accounts?

2. Applications: a risk register for loss of services / flows based on condition / trends and future use

		Likelihood of impact		
Level of impact		<i>Low</i>	<i>Medium</i>	<i>High</i>
Low		No discernible change	Reduced flow	Reduced flow
Medium		Reduced flow	Reduced flow	Significant decline/loss of flow
High		Significant decline/loss of flow	Significant decline/loss of flow	Significant decline/loss of flow

Risk register scoring matrix following from Mace et al. (2015)

<https://onlinelibrary.wiley.com/doi/full/10.1111/rec.13632>

Policy linkages: Climate, Water and Biodiversity

Climate regulation and Land use (future proofing)

- **National policy issue:** Acceleration of the National Response to Reducing Greenhouse Gas Emissions, Climate Mitigation and Adaptation; Changes in Land Use and Land Cover; Common Agricultural Policy (75% Ireland agri)
 - **Ireland:** Land use review; Climate adaptation

Integrated Catchment Management and WFD reporting;

- **National (EU) policy issue:** Restore and Protect Water Quality
 - **Ireland:** Water Framework Directive (Floods, Drinking Water)

Biodiversity – building healthy, resilient ecosystems

- **National policy issue:** Nature and Wild Places
 - **EU:** Restoration targets under EU Biodiversity Strategy for 2030
 - **Ireland:** NBAP 2024-2030

INCASE recommendations (EPA report 441)

Developing and using natural capital / ecosystem accounting is a national priority.

Increased expertise is required for operationalisation of ecosystem accounting in Ireland.

A detailed, high-resolution ecosystem map is required.

Ecosystem condition assessment needs further development.

The relationship between extent and condition of natural capital assets and flows of services and benefits requires more nuanced understanding.

Ecosystem service assessment needs a standardised approach.

A centralised data platform is required.

Not all accounts should be monetised.

Reflections on the process

- 1. Systems thinking** - trade-offs are unavoidable. Nature is not integrated into decision making, money is (GDP: a measure of how money flows).
- 2. Taking a leap of faith** – de-constructing silo-ed ways in relation to biodiversity, water, carbon and social cohesion (*in an integrated system how can you just report on one aspect?*).
- 3. Stakeholder engagement:** the gel that holds NCA together and brings it to its full potential, collaboration / collective learning – raising understanding together (*this takes time!*).
- 4. Whose value matters, and why?** We must have a broader mapping out of values; thoughts and words inform guide and *influence* discussions.

What next? *Action?*



*#Generation Restoration
#NaturePositive
#NatureFinance
#ESG #CSRD
#BuildBackBetter*

- **Integrated nature restoration** plans using SEEA EA as a tracker
- **Catchment plans** rather than site level plans – nature (biodiversity, water, soils, livelihoods)
- Risk register – **prioritise integrated action** (limited cash – we need to identify quick wins in the context of long games)
- **Community engagement** – living plans that make sense and can be carried out by local actors (flexible, adaptive, relevant, realistic)
- **Systems support** – inter-departmental alignment
- **Lead the way** – bring a blueprint to the EU (*lead, don't follow*)

In a world of fire, floods, war and guaranteed uncertainty:
nature matters for people,
but people also matter for nature
(we need to make nature visible on the books!)

